

# Territorial Processes and their Implementation into the Practice of Regional Planning – by the Example of Hajdú-Bihar County



**Zsolt RADICS, PhD** assistant professor  
**Ernő MOLNÁR, PhD** assistant professor  
**János PÉNZES, PhD** assistant lecturer

„A kutatás az Európai Unió és Magyarország  
támogatásával, az Európai Szociális Alap  
társfinanszírozásával

**a TÁMOP 4.2.4.A/2-11-1-2012-0001**

azonosító számú „Nemzeti Kiválóság Program –  
Hazai hallgatói, illetve kutatói személyi támogatást  
biztosító rendszer kidolgozása és működtetése  
konvergencia program” című kiemelt projekt keretei  
között valósult meg”.

**Territorial Cohesion in Europe**

International Conference for the 70th Anniversary of  
the Transdanubian Research Institute

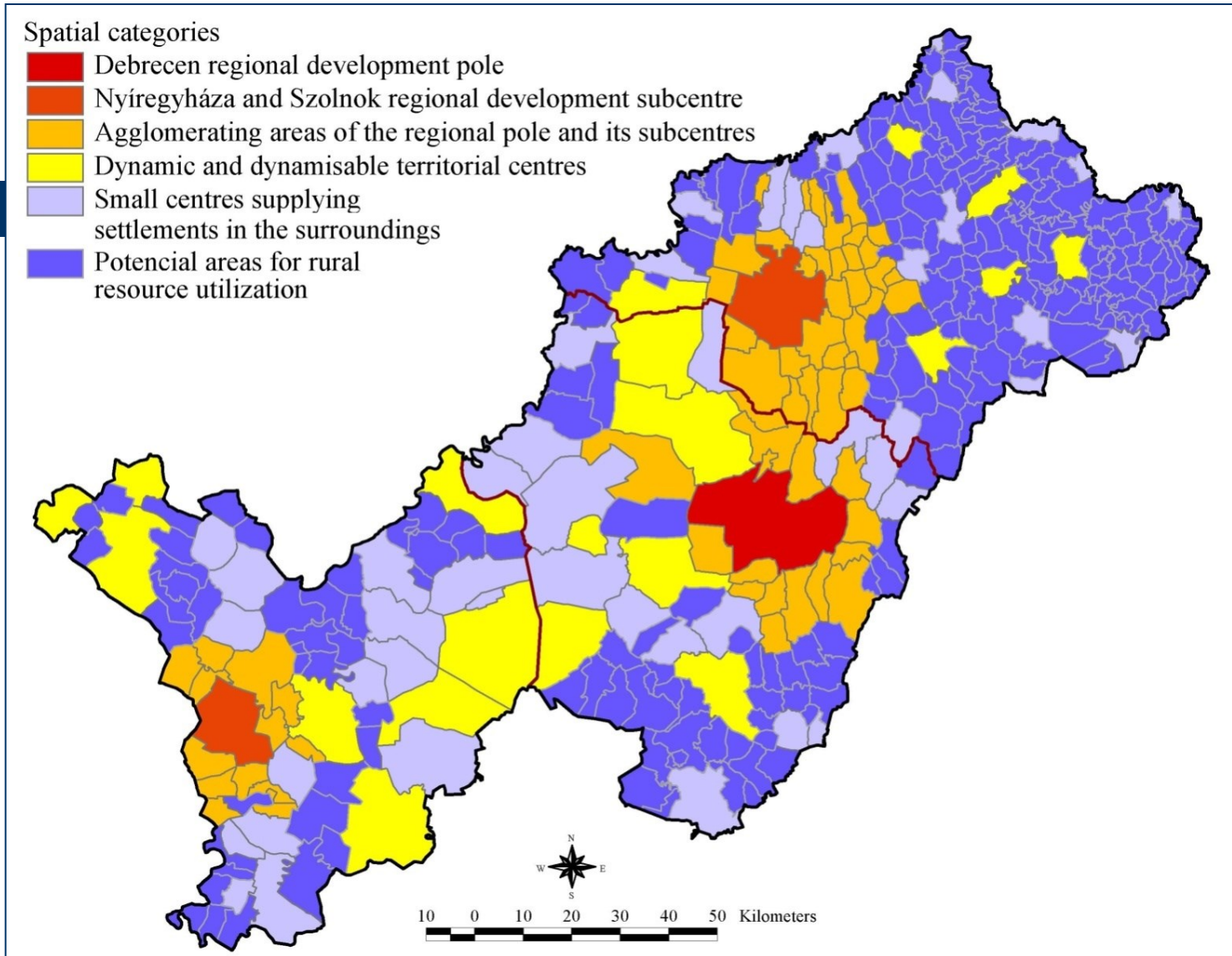
**June 27-28<sup>th</sup>, 2013**

**Pécs, Hungary**

## Relevance of the topic

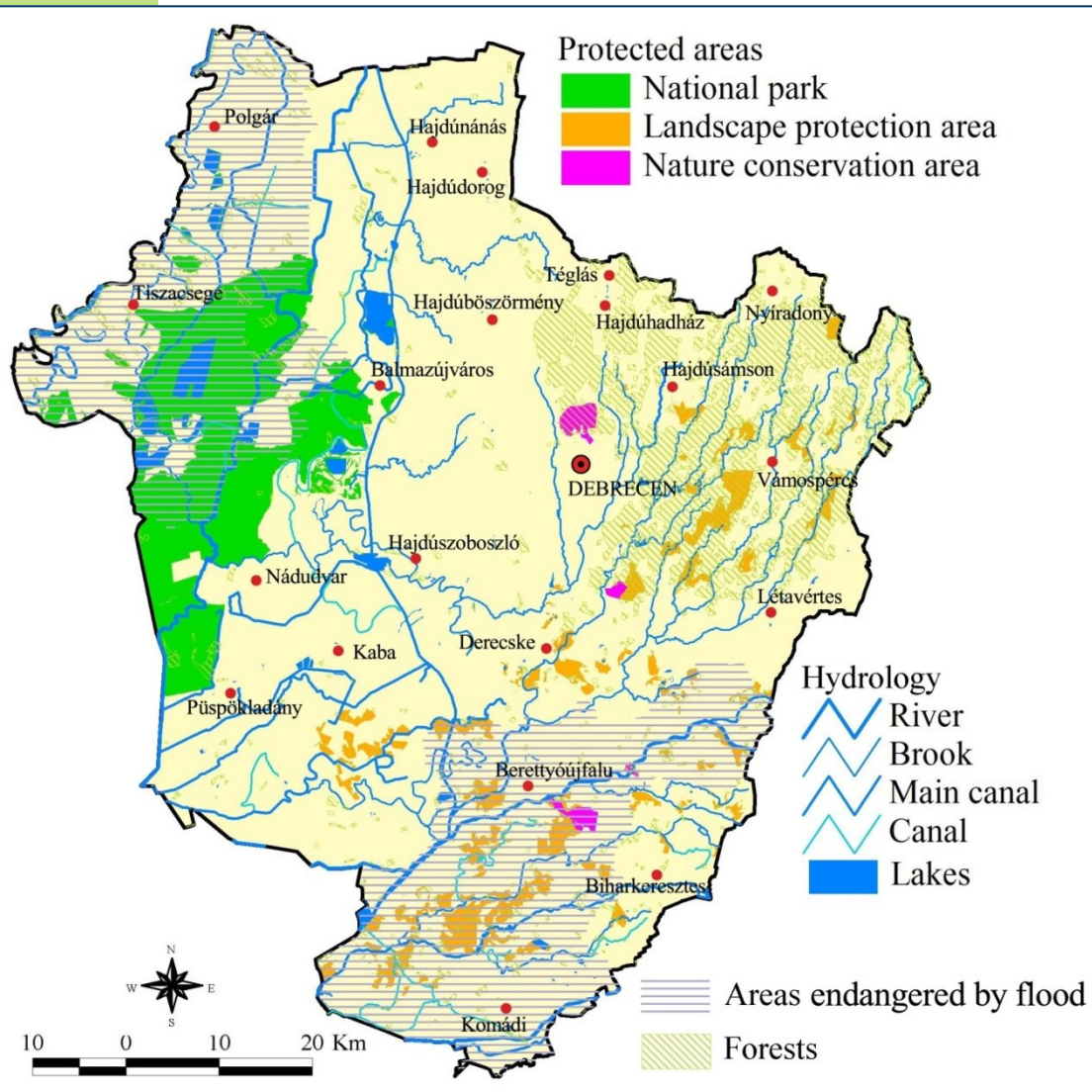
- One of the basic problems of development planning is the frequent *overweighing of sectoral thinking*;
- In order to handle the spatial problems, *it is necessary to integrate spatial aspects into the planning process*;
- There was an attempt to *define region-specific spatial planning categories* based on complex indices – in the Regional Development Strategy of the North Great Plain Region 2007-2013;
- The *objective of this paper is to create a spatial categorization* that can be basis of further regional development attempts.

# Spatial categorization in the North Great Plain Region



Spatial development categories of the North Great Plain region (ÉARFÜ 2008)

# Physical geography of Hajdú-Bihar county



➤ There are eleven characteristic landscapes within the county, the most important ones:

- Hortobágy,
- Hajdúság,
- South-Nyírség;
- Sárrét.

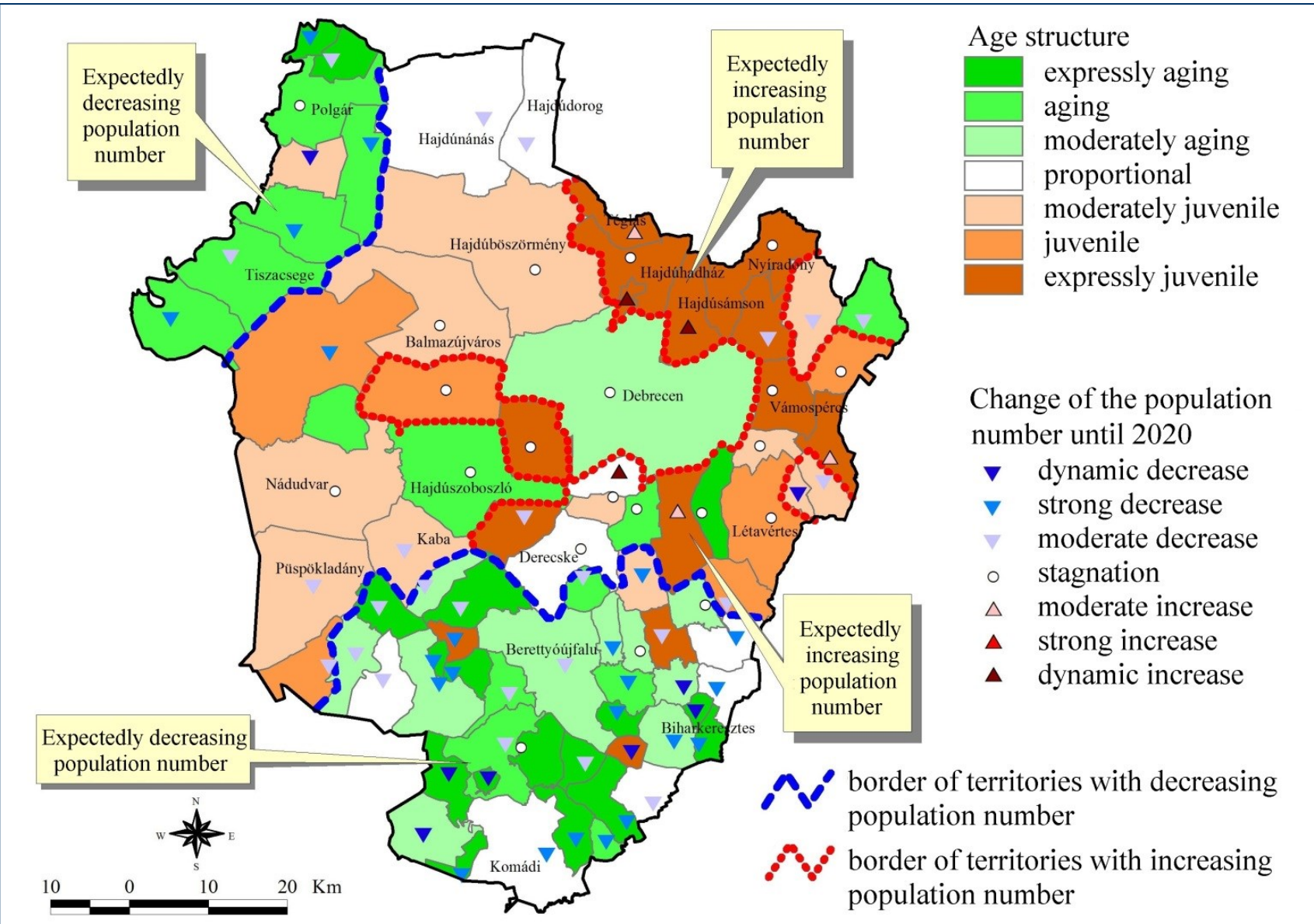
➤ Significant part of the Hortobágy is nationally protected and part of the UNESCO World Heritage;

➤ Extended territories of the county are endangered by floods or high ground-water;

The natural characteristics of Hajdú-Bihar county



# Demographic processes and human resources

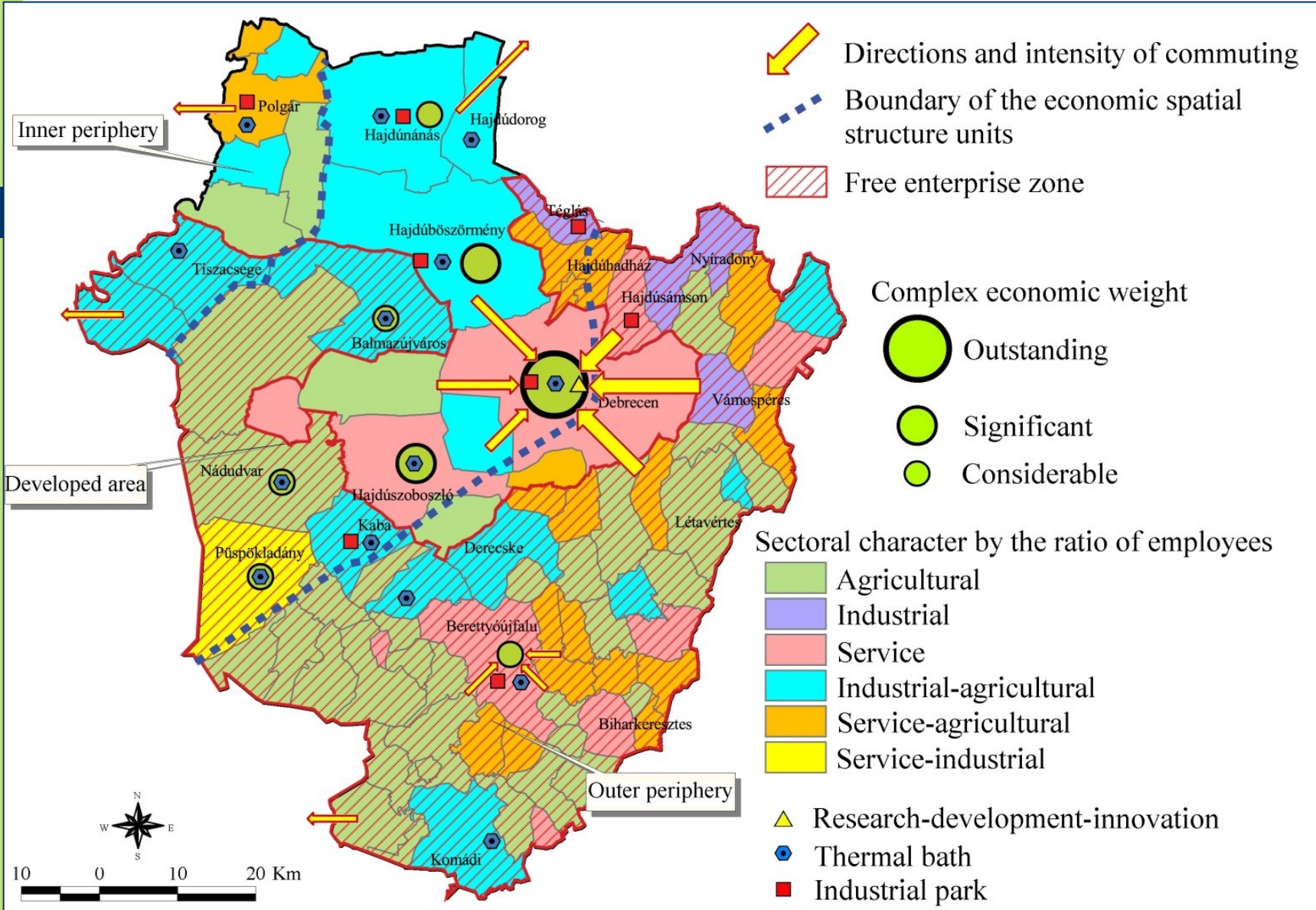


The age structure and demographic expectations in the county

## Demographic processes and human resources

- The general decreasing trend of the population number is moderate;
- The county has negative migration balance that resulted in a moderate but unambiguous outmigration;
- Decreasing population number has been typical except for the settlements in the surroundings of Debrecen;
- Increasing number of Roma population is characteristic in several settlements and the largest communities live in the largest towns of the county (~8%);
- Human resources are concentrated within the investigated area – however, the dominance of Debrecen has decreased since 2001;
- Selective migration makes the conditions even worse and conserves this problem of human resources.

# Explaining economic conditions in Hajdú-Bihar county



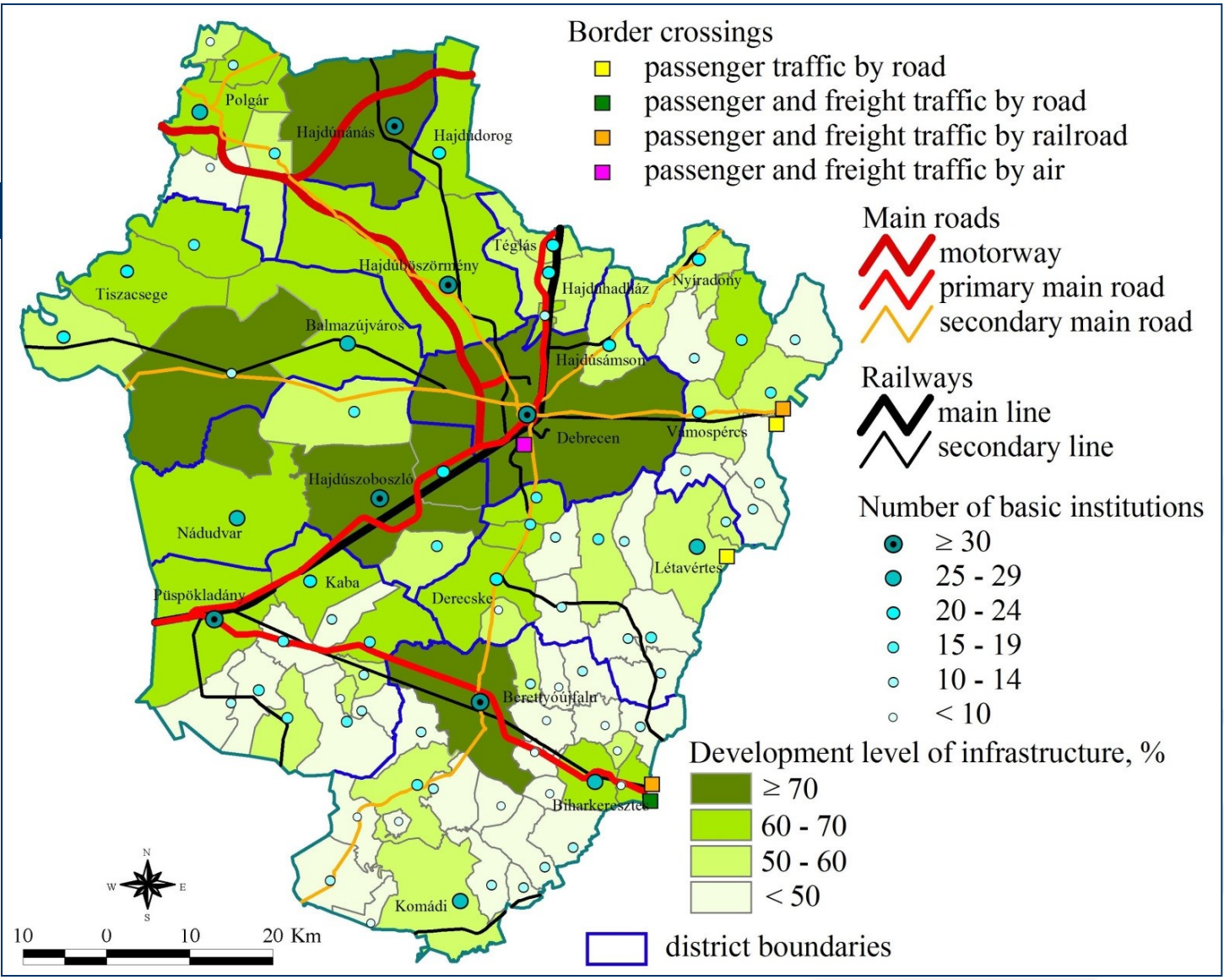
The economic spatial structure of Hajdú-Bihar county

## Explaining economic conditions in Hajdú-Bihar county

- *Debrecen plays a dominant role* in the economy of the county;
- *Debrecen and Berettyóújfalu* can be defined as *commuting centres*. There is significant inter-county labour migration in the surroundings of Tiszaújváros and Tiszafüred;
- The two *peripheral areas* are characterized by *underdeveloped economic bases*;
- *The differences in the economic structure* of the settlements within the county are also remarkable;
- *The potentials of the future economic development*: first of all industrial parks and thermal baths play important roles in the restructuring of local economies.



# The situation of infrastructure

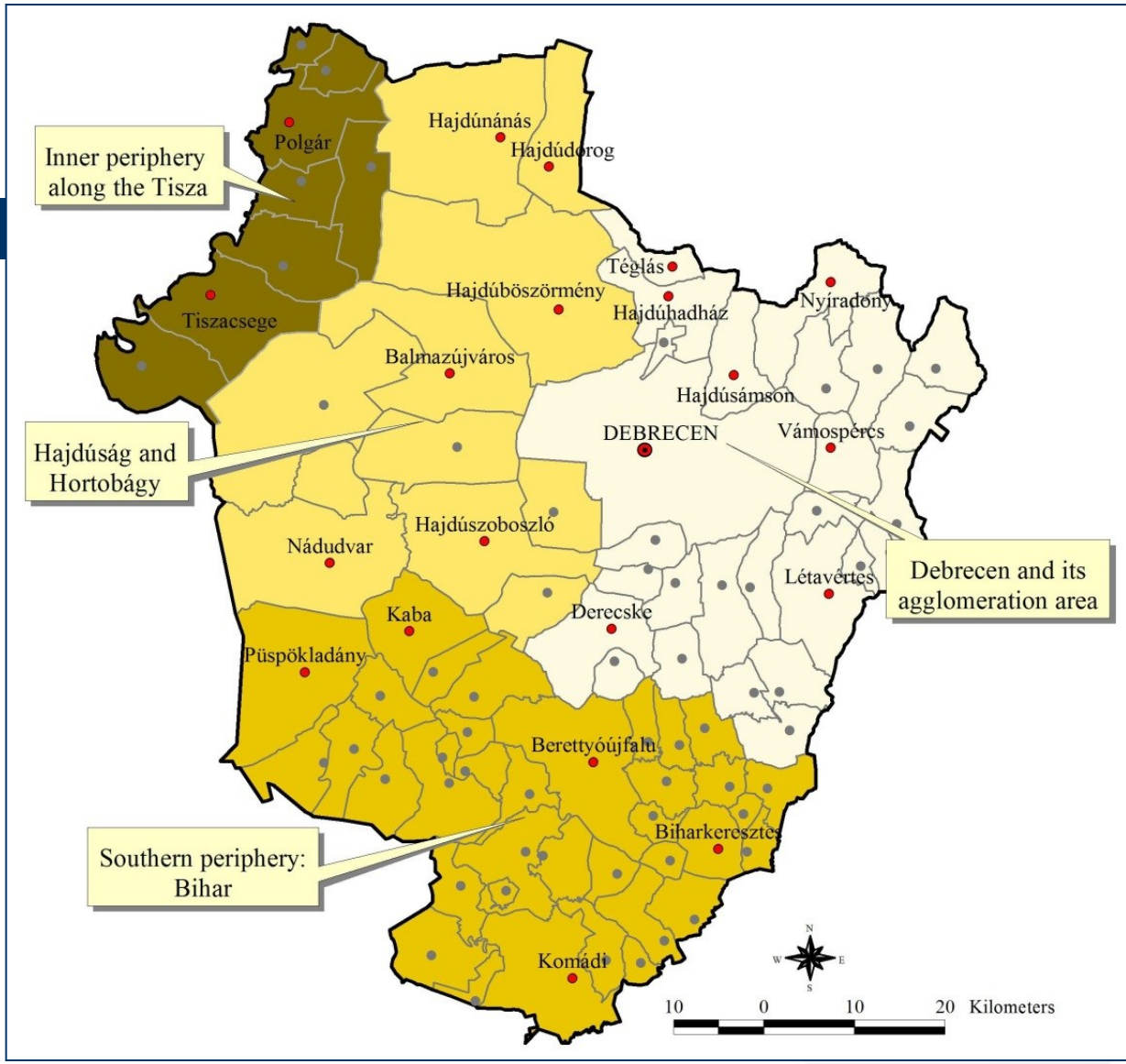


The elements and development of infrastructure in the county

## The situation of infrastructure

- *The main road and railway infrastructural lines provide good connections to the direction of Budapest and within the Region (M3-M35 motorway, route 4, main railway line number 100);*
- *However, the secondary lines and smaller intraregional infrastructure require developments – the inner and outer periphery seems to be characteristic from this respect as well;*
- *The institutional background of settlements represents significant disparities, but most of the towns have the basic institutions;*
- *The development level of communal infrastructure (calculated by ten indicators with Bennett method) represents similar inequalities than the other previously illustrated factors.*

# Possible spatial categories (synthesis)



Spatial categories in Hajdú-Bihar county

## Conclusions

- The delimitation of these units was carried out based on their *geographical, social-economic-infrastructural features, their characteristics in the network of settlements and their relations in the spatial pattern*;
- Spatial categories:
  - 1; *Debrecen and its agglomeration area*;
  - 2; *Traditional agricultural and small towns: Hajdúság-Hortobágy*;
  - 3; *The southern periphery: Bihar*;
  - 4; *The inner periphery along the Tisza*;
- The current delimitation might be a basis for the regional planning that gives the appropriate emphasis on the spatial approach. Unfortunately, the recent restructuring of the planning represent a different attitude.





**Thank you for your attention!**